



Ingenious METHODS to

# EXHIBIT & MAGNIFICENTLY DISPLAY

*your wares for  
discerning* BUSINESSES *like yours*



**nettl** 

# EXHIBITIONS & DISPLAYS

Sometimes it's not just what you say, it's how you look when you're saying it.

Our new Exhibit range gives you the tools to emphasise your message. For the first time, create enormous eye-catching displays... without the eye-watering price tag.

We've invested in the very latest, high-end, direct-to-fabric printing technology – the first of its kind in the UK. Our UK-based production hub employs talented seamstresses and technicians, ready and skilled to turn your ideas into a wonderful fabric reality.

Seeing is believing. Drop by your neighbourhood Nettl studio to goggle at the samples and talk through options.

Make the most of your next exhibit.

*Let's go!*



## CONTENTS

- 04. Display Stands
- 12. Curved Backdrops
- 16. Straight Backdrops
- 22. Meeting Booths
- 28. Acoustic Covers
- 30. Seating
- 34. Tables
- 38. Tension Fabric Boxes
- 40. Barriers & Covers
- 44. Gazebos
- 48. Outdoor
- 50. Pop Out Banners
- 52. Flags
- 58. Roller Banners
- 60. PVC Banners
- 62. Posters & Wallpaper
- 66. Printed Fabric





# DISPLAY STANDS



All our freestanding displays are highly portable. Clip together the frames, then pull over the fabric graphic.

Use at networking meetings, exhibitions or for in-store point-of-sale displays.

When it's over, dismantle in minutes and be on your way again – each comes with a carry case.



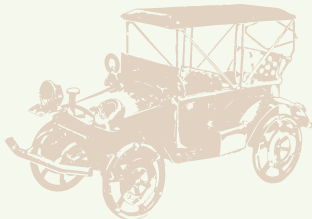


# HOW FABRIC DISPLAYS WORK

**Fabric Displays** are made up of two main components — a strong, lightweight, tubular aluminium frame and a printed fabric cover.

The 260gsm 'Stretch' fabric cover is printed on both sides as standard. Designed to fit snugly over the frame, it is secured at one edge with a zip fastening. The fabric cover is changeable and additional covers can be ordered separately.

These 'next generation' displays deliver maximum impact and completely eliminate the problem of visible join lines on larger displays.



Fabric Display frames utilise a simple 'click together' mechanism.



Each part is numbered for easy identification and quick assembly.



Stretch the fabric graphic over the frame and zip up.



All Fabric Display frames are supplied with a carry bag for easy transportation and storage. 05



Each stand clicks together in a few minutes and then simply stretch over the printed fabric graphic.



# PYTHON

POP UP STAND

2.3 x 0.9m

An impressive and imposing sculpture. The fabric is double sided so you can switch messages for different events with the same graphic.

*Stand + graphic*

**£239** £299 FDSLDFC

*or graphic only* **£145** FDSLDFC

*in 5 working days*

Exact dimensions: 2270(h) x 930(w) mm

260gsm 'Stretch' fabric cover + frame

Printed both sides







# BABY PYTHON

NEW

POP UP STAND

1.9 x 1.0m

When you're displaying in a room with a lower ceiling, go for the Baby Python, which is shorter and wider than a regular Python.

*Stand + graphic*

£229 <sup>£289</sup>  
FDSWINFC

*or graphic only* £125 FDSWINC

*in 5 working days*

Exact dimensions: 1890(h) x 1000(w) mm

260gsm 'Stretch' fabric cover + frame

Printed both sides



# KING PYTHON

NEW

POP UP STAND

3.5 x 1.2m

This enormous display will tower above others. A good way to give your expo stand some height. The base is weighted for stability.

*Stand + graphic*

**£499** FDSUBFC

*or graphic only* **£299** FDSUBC

*in (5) working days*

Exact dimensions: 3500(h) x 1200(w) mm

260gsm 'Stretch' fabric cover + frame

Printed both sides





# AXE

POP UP STAND

TOP  
SELLER

2.0 x 0.9m

Really great for event  
signage and navigation.

*Stand + graphic*

**£229** £289  
FDSTKQFC

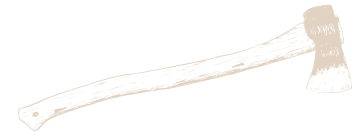
*or graphic only* **£125** FDSTKOC

*in 5 working days*

Exact dimensions: 2000(h) x 850(w) mm

260gsm 'Stretch' fabric cover + frame

Printed both sides





# PEACOCK

MEDIA DISPLAY STAND

2.2 x 0.6m

Add a tablet and connect it to a big screen.

*Stand + graphic*

**£329** FDSOSLFC

*or graphic only* **£182** FDSOSLC

*in 5 working days*

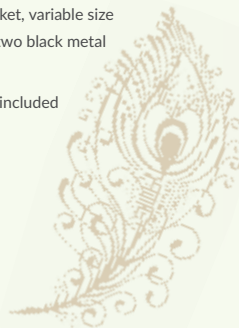
Exact dimensions: 2200(h) x 595(w) mm

260gsm 'Stretch' fabric cover + frame

Printed both sides

Includes a TV bracket, variable size tablet holder and two black metal literature baskets

Tablet and TV not included



# PADIUM

TABLET DISPLAY STAND

1.3 x 0.4m

Attach an iPad or tablet to capture visitor details or explain your proposition.

*Stand + graphic*

**£159** £199 FDSOSAFC

*or graphic only* **£83** FDSOSAC

*in 5 working days*

Exact dimensions:

1290(h) x 440(w) mm

260gsm 'Stretch' fabric cover + frame

Printed both sides

Includes variable size tablet holder

Tablet not included







# BOOTH

POP UP KIOSK

2.3 x 1.0m

Perfect for information kiosks  
or sample giveaways.

*Stand + graphic*

**£329** FDSBARFC

*or graphic only* **£148** FDSBARC

*Header + graphic* **£132** FDSBAHFC

*in 5 working days*

Exact dimensions:

960(h) x 960(w) x 500(d) mm

260gsm 'Stretch' fabric cover + frame

Shown with optional header

height: 2300(h) mm

Flat packs for easy transportation

# KANGAROO

POP UP LITERATURE HOLDER

TOP  
SELLER

1.5 x 0.4m

Each basket holds up to 5cm  
of A4 landscape brochures.

*Stand + graphic*

**£165** £189 FDSPARFC

*or graphic only* **£88** FDSPARC

*in 5 working days*

Exact dimensions: 1540(h) x 360(w) mm

260gsm 'Stretch' fabric cover + frame

Printed both sides

Includes two metal  
literature baskets



# CURVED BACKDROPS



Ever had to build one of those frames with magnetic bars and panels of graphics? Not fun.

Our curved backdrop displays pop up in minutes. Each has a continuous graphic, so you don't need to worry about lining up panels – stretch your message across the whole stand.

They're optionally double sided too.

And the magic of stretchy fabric is you can flip which side is front each time.

One message at one event, flip, different message at the next.

# CURVE 30

CURVED POP UP STAND

TOP  
SELLER

2.3 x 3.0m

Our most eye-catching display  
– a full three metres in width.

## SINGLE SIDED

*Stand + graphic*

£384 FDSR00FC

*or graphic only*

£299 FDSR00C

in 5 working days

## DOUBLE SIDED

*Stand + graphic*

£489 FDSR0MFC ~~£579~~

*or graphic only*

£403 FDSR0MC

in 5 working days

Exact dimensions: 2300(h) x 2990(w) mm

260gsm 'Stretch' fabric cover + frame

Printed both sides, or front only with white reverse









# CURVE 24

CURVED POP UP STAND

2.3 x 2.5m

Lightweight and elegant, a  
great backdrop to your expo.

## SINGLE SIDED

*Stand + graphic*

£325 FDSBLOFC

*or graphic only*

£202 FDSBLOC

in 5 working days

## DOUBLE SIDED

*Stand + graphic*

£409 £529 FDSBLNFC

*or graphic only*

£285 FDSBLNC

in 5 working days

Exact dimensions: 2300(h) x 2480(w) mm

260gsm 'Stretch' fabric cover + frame

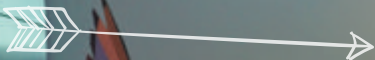
Printed both sides, or front only with white reverse



TOP  
SELLER



# STRAIGHT BACKDROPS



These straight backdrops are just as imposing as the curved ones, but have a slightly smaller footprint.

Combine our Stage 46, Stage 30 and Stage 18s to make L-Shaped or U-shaped displays to hide ugly shell schemes, with our optional connection kits (page 21).



# STAGE 46

STRAIGHT POP UP STAND

2.3 x 4.6m

Our widest single stand.  
Yet has a tiny footprint.



## SINGLE SIDED

*Stand + graphic*

**£659** FDSSA0FC

*or graphic only*

**£518** FDSSA0C

in **5** working days

## DOUBLE SIDED

*Stand + graphic*

**£825** £869 FDSSANFC

*or graphic only*

**£682** FDSSANC

in **5** working days

Exact dimensions: 2270(h) x 4572(w) mm

260gsm 'Stretch' fabric cover + frame

Printed both sides, or front only with white reverse





TOP  
SELLER

# STAGE 30

STRAIGHT POP UP STAND

2.3 x 2.9m

Make a backdrop for an expo stand or use as a room divider.

**SINGLE SIDED**

*Stand + graphic*

**£415** FDSNY0FC

*or graphic only*

**£318** FDSNY0C

*in 5 working days*

**DOUBLE SIDED**

*Stand + graphic*

**£519** £619  
FDSNYCFC

*or graphic only*

**£384** FDSNYCC

*in 5 working days*

Exact dimensions: 2270(h) x 2900(w) mm

260gsm 'Stretch' fabric cover + frame

Printed both sides, or front only with white reverse







# STAGE 18

STRAIGHT POP UP STAND

2.3 x 1.8m

Slimline, standalone display or connect to Stage 30 or Stage 46 displays to make a corner booth with optional connection kit (page 21).

## SINGLE SIDED

*Stand + graphic*

£305 FDSCHOFC

*or graphic only*

£192 FDSCHOC

in 5 working days

## DOUBLE SIDED

*Stand + graphic*

£379 FDSCHIFC

*or graphic only*

£275 FDSCHIC

in 5 working days

Exact dimensions: 2270(h) x 1800(w) mm

260gsm 'Stretch' fabric cover + frame

Printed both sides, or front only with white reverse





Rialto Bridge shown attached to Stage 30 Stand.  
Attach a TV to the bridge (bracket included, TV not included).

# RIALTO NEW

BRIDGE

2.3 x 0.8m

The Rialto Bridge can be clamped to any Stage 18, Stage 30 or Stage 46 stand with fittings included.

*Stand + graphic*

**£415** FDSHAMFC

*or graphic only* **£277** FDSHAMC

in **5** working days

Exact dimensions:

2270(h) x 800(w) x 1850(d)

260gsm 'Stretch' fabric cover + frame

Full colour print on both sides

Supplied with aluminium frame, TV bracket, clasps, allen key and carry bag



# DISPLAY LIGHTING

## LED LIGHTING

Illuminate your display stand for increased visibility and effect.

Easily attach the light to the tubular aluminum frame at the top of the stand using the 'c' shaped clamp (supplied).

*Light + clamp*

**£84** FDLEDCL2

*in ③ working days*

12 watt LED flood light

Black finish

Comes with clamp for easy attachment

3m power lead

Suitable for use with the following fabric stands:  
Python, Kangaroo, Axe, Curve 24, Curve 30,  
Stage 18, Stage 30, Stage 46, Booth (with header),  
Peacock, Huddle & Embrace.



# STAGE CONNECTION

## KIT FOR STRAIGHT BACKDROPS

Join multiple straight Stage 18, Stage 30 and Stage 46 straight backdrops to form L-shape or U-shape displays.

Create an L-shaped display with 90 degree connection kit or longer straight displays with 180 degree connection kit.



*Clamp kit*

**£18**

*in ③ working days*

Stage Connection Kit  
180 degrees FDSCK180



Stage Connection Kit  
90 degrees FDSCK90

One pair of aluminium  
c-clips per kit

# MEETING BOOTHS



Rent a space-only stand at your next expo and pop-up one of these bad boys – they're incredible in real life.

Or use in your office to make inspirational booths for solo work or effective meetings.



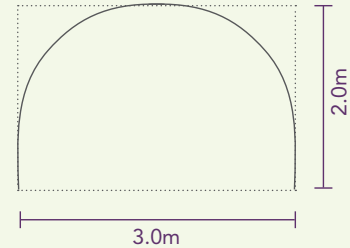


# EMBRACE U

U-SHAPED MEETING BOOTH

2.0 x 3.0m

Make a private meeting space in your office or divide up your open plan rooms with these huge booths. Use the front and back – both are printed.



*Stand + graphic*

**£995** ~~£1195~~  
FDSCAPFC

*or graphic only* **£619** FDSCAPC

in **5** working days

Exact dimensions: 2300(h) x 3000(w) x 2000(d) mm  
260gsm 'Stretch' fabric cover + frame  
Printed both sides





# HUDDLE

SLOPED MEETING BOOTH

2.0 x 3.0m

Eye-catching one-piece, ready formed stand, printed on all sides. Spiral shape has lower left wall rising to high right wall.

*Stand + graphic*

£995 ~~£1195~~  
FDSBEIFC

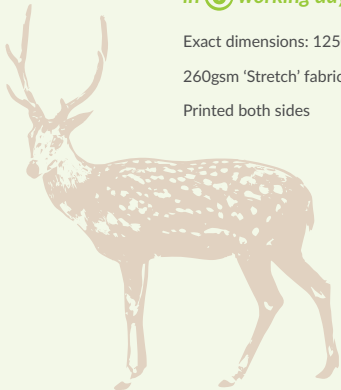
*or graphic only* £619 FDSBEIC

in 5 working days

Exact dimensions: 1250-2300(h) x 3000(w) x 2000(d) mm

260gsm 'Stretch' fabric cover + frame

Printed both sides



# EMBRACE C

NEW

C-SHAPED MEETING BOOTH

2.5 x 2.9m

Curves right round on both sides to form hi-backed shape.

*Stand + graphic*

£995<sub>FDSPREFC</sub>

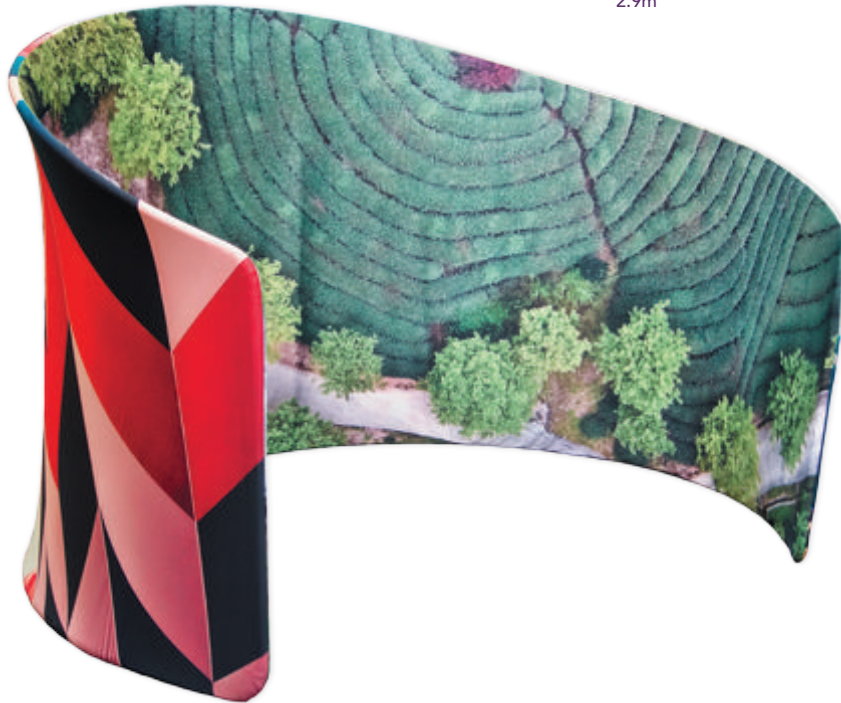
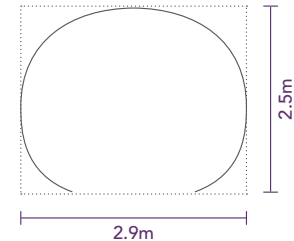
or graphic only £619<sub>FDSPREC</sub>

in 5 working days

Exact dimensions: 2300(h) x 2850(w) x 2500(d) mm

260gsm 'Stretch' fabric cover + frame

Printed both sides





# SNUGGLE NEW

C-SHAPED MEETING BOOTH

2.4 x 2.0m

A cosy booth 1.8m tall with a footprint of 2.4 x 2.0m.

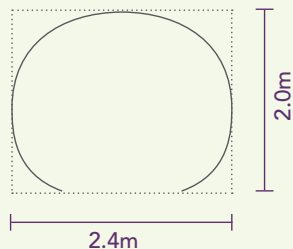
*Stand + graphic*

£795 FDSWELFC

*or graphic only* £499 FDSWELC

in 5 working days

Exact dimensions: 1800(h) x 2400(w) x 2000(d) mm  
260gsm 'Stretch' fabric cover + frame



# ACOUSTIC COVERS

Pimp your boring office partitions with these sexy covers. They're like big sleeves which slide over standard partitions.

Design whatever you like on each side and the spine – go wild – and make your office a happier and more productive place.

There's a choice of fabric – rough textured or funky honeycomb – both have extra acoustic properties to reduce noise.



# SOUND COVER 15

ACOUSTIC SCREEN COVER

1.5 x 1.5m

Hide ugly office partitions with these double sided screen covers.

*Textured fabric cover*

£232 FDM15C

in 5 working days

Suitable for a floor screen size 1500(w) x 1500(h) x 45(d)mm

270gsm textured acoustic fabric

or optional 300gsm 'honeycomb' dimple textured acoustic fabric for £372 FDM15CC

Front, reverse and side coverage | screen not included



# SOUND COVER 18

ACOUSTIC SCREEN COVER

1.8 x 1.5m

Shown in honeycomb fabric – also available in a textured acoustic fabric

*Textured fabric cover*

£256 FDM18C

in 5 working days

Suitable for a floor screen size 1500(w) x 1800(h) x 45(d)mm

270gsm textured acoustic fabric

or optional 300gsm 'honeycomb' dimple textured acoustic fabric for £421 FDM18CC

Front, reverse and side coverage | screen not included







# SEATING

Have you seen the price of hiring expo furniture? Why not use these seating cubes at your next event and then use them in your office when you return.

Brand on all sides with your logo, or something funky which suits your brand.



# KOLA MAX

SEATING CUBE

0.5 x 0.5m

A comfortable high density foam cube for informal meetings.

*Seat + graphic*

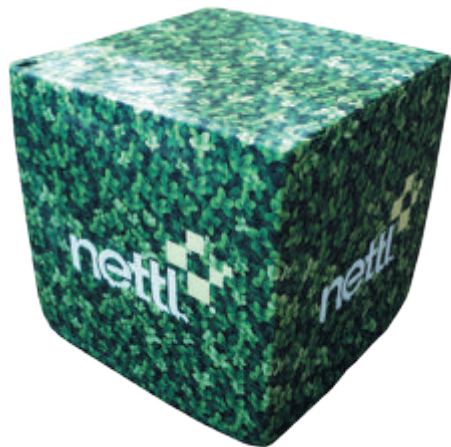
£159 <sup>£199</sup>  
FDSB0SFC

*or graphic only* £119 FDSB06SC

in 5 working days

Exact dimensions: 450(h) x 450(l) x 450(d)mm

260gsm 'Stretch' fabric cover  
+ foam cube



# KOLA LITE

SEATING CUBE WITH STORAGE

0.4 x 0.4m

Low cost, personalised stools are great for creating an audience area at your event.

*Seat + graphic*

£99 FDSDU1FC

in 5 working days

360(h) x 360(l) x 360(d)mm

260gsm 'Stretch' fabric cover + frame

Concealed storage under the seat

Also available with black seat for £9 less









# THE ISLAND

WATERPROOF BEAN BAG

1.2 x 1.2m

Create comfy seating chill-out areas  
with these massive bean bags.

*Beanbag + cover*

**£149** FDSBALFC

*or graphic only £99* FDSBALC

*in 5 working days*

Exact dimensions: 1200(w) x 1200(l) mm

285gsm 'Tent' fabric over + inner sock

+ polystyrene beans

Printed both sides

Fire retardant and fade resistant



# GIRAFFE

BAR STOOL

0.9 x 0.4m

*Stool + cover*

**£159** FDSLASF

*or graphic only £67* FDSLASC

*in 5 working days*

Exact dimensions:

910(h) x 400(d) mm x 510(d) mm

Seat height 630(h) mm

Solid wood bar stool frame with

polyurethane foam seat and

personalised fabric cover

260gsm 'Stretch' fabric over

Assembly required



# TABLES



Make your event more personal with these custom printed tables. Each has a pop up or flip top table inside and a stretchy fabric cover.

Or, if you already have a table, choose one of our standard size tablecloths, or we can make one to fit your dimensions.



# MOJITO

POP UP COCKTAIL TABLE



1.1 x 0.8m

Great as a demo station with bar stools for standup meetings.

Table + graphic

£275 <sup>£329</sup>  
FDSRI0FC

or graphic only £148 FDSRI0C

in 5 working days

Exact dimensions: 1100(h) x 800(dia.) mm

260gsm 'Stretch' fabric cover + table

Printed top and four sides

Flat packs for easy transportation



# BELLINI

FLIP COCKTAIL TABLE

1.1 x 0.6m

Lower cost aluminium table which flips for easy storage or transportation.

Table + graphic

£189 <sup>£249</sup>  
FDSVENFC

or graphic only £132 FDSVENC

in 5 working days

Exact dimensions: 1140(h) x 600(dia.) mm

260gsm 'Stretch' fabric cover + table

Printed top and four sides

Does not flat pack



Lid flips up for  
easy storage





# MARGARITA

FABRIC TABLE

0.7 x 0.8m

The right height to go with Kola  
Max or Kola Lite seating cubes.

*Square folding table + fabric cover*

**£189** £215  
FDSMEXFC

*or graphic only* **£115** FDSMEXC

*in 5 working days*

Exact dimensions: 735(h) x 855(w) x 855(d) mm

260gsm 'Stretch' fabric cover + square folding trestle table

Printed top and four sides

Flat packs for easy transportation



GET A  
**CUSTOM  
SIZE**

Ask for a price.

# ARTHUR 5 & 6

FITTED TABLECLOTHS

1.8 x 3.2m

Personalise your conference table with a neat  
branded tablecloth which drapes on three sides.

*for 5 ft table*

**£109** £229  
FDTCAR5

*in 5 working days*

*for 6 ft table*

**£119** £279  
FDTCAR6

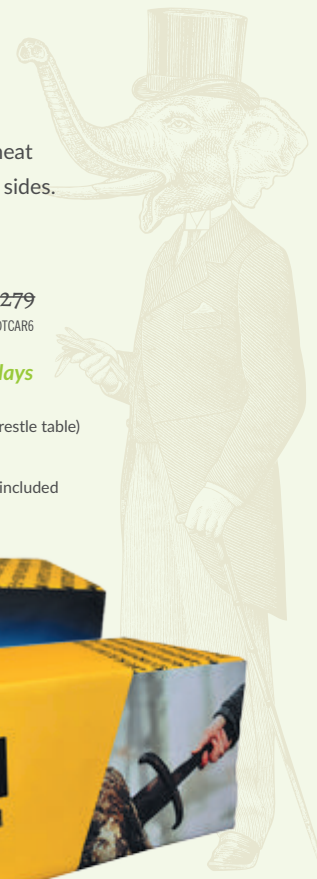
*in 5 working days*

Exact dimensions: Arthur 6: 1790 x 3280mm (to fit 6ft trestle table)

Arthur 5: 1800 x 3000mm (to fit 5 ft trestle table)

210gsm polyester display fabric | hemmed | table not included

Printed top and four sides



# ARTHUR JUNIOR

TABLE RUNNER

1.0 x 2.0m

Get the personalised look for the lowest price.

*Table runner for trestle table*

£59 <sup>£89</sup>  
FDTRARJ

in 5 working days

Exact dimensions: 1000 x 2000mm

210gsm polyester display fabric

Printed one side | hemmed | table not included



GET A  
CUSTOM  
SIZE

from £29  
per m<sup>2</sup>  
FDASDISH

See website for price  
and minimum/maximum  
dimensions.

# GUINEVERE <sup>NEW</sup>

6 FOOT LOOSE TABLECLOTH

1.8 x 2.8m

These are designed for 6ft trestle tables but ask for a custom size if your tables are different.

*Tablecloth for trestle table*

£89 <sup>FDTCGU6</sup>

in 5 working days

Exact dimensions: 1800 x 2800mm (to fit 6ft trestle table)

210gsm polyester display fabric

Printed one side | hemmed | table not included



# TENSION FABRIC BOXES



Turn any corridor or communal area into a mini art gallery with beautiful fabric boxes.

Each is an aluminium frame, with thin channels. Attach a fabric graphic, which has silicon stitched to the edge, by stretching it across the frame. The graphic extends right to the edge of the frame, giving a large, uninterrupted, display area.

**Wall Boxes** can be screwed to a smooth wall, and **Floor Boxes** are free standing.

**Lightboxes** feature a row of led lights inside the frame which illuminates the image from behind.

Graphics and frames can be ordered separately. Floor Boxes and Lightboxes are both double sided – so two graphics are recommended.

# LIGHTBOX

DOUBLE SIDED FLOOR LIGHTBOX

2.0 x 1.0m *various sizes available*

*Lightbox + graphics*

from **£1371** FDLB1020 + FDLBGE2

in **(5) working days**

Price above dimensions: 2000(h) x 1000(w) mm

Free standing double-sided lightbox, aluminium frame with channels for attaching fabric graphics

Supplied flat – requires assembly

Price includes 2 x fabric graphics:

165gsm backlit PU coated polyester

Finished with hem and silicone edge





# WALL BOX

MOUNTED WALL DISPLAY

size	each	
0.5 x 0.5m	£76	FDWB0505 + FDBGA1
0.5 x 1.0m	£94	FDWB0510 + FDBGB1
1.0 x 1.0m	£118	FDWB1010 + FDBGC1
1.0 x 1.5m	£143	FDWB1015 + FDBGD1
1.0 x 2.0m	£184	FDWB1020 + FDBG1
1.5 x 1.5m	£173	FDWB1515 + FDBGF1
2.0 x 2.0m	£273	FDWB2020 + FDBGG1

in 5 working days

16mm aluminium frame with channels for attaching fabric graphics

Supplied flat – requires assembly

Price above includes 1 x 260gsm 'Stretch' fabric graphic

Finished with hem and silicone edge

Frame and graphics available separately



# FLOOR BOX

DOUBLE SIDED FLOOR DISPLAY

size	each	
0.5 x 0.5m	£357	FDFB0505 + 2 x FDBGA1
0.5 x 1.0m	£406	FDFB0510 + 2 x FDBGB1
1.0 x 1.0m	£468	FDFB1010 + 2 x FDBGC1
1.0 x 1.5m	£531	FDFB1015 + 2 x FDBGD1
1.0 x 2.0m	£592	FDFB1020 + 2 x FDBG1
1.5 x 1.5m	£604	FDFB1515 + 2 x FDBGF1
2.0 x 2.0m	£765	FDFB2020 + 2 x FDBGG1

in 5 working days

44mm aluminium frame with channels for attaching fabric graphics

Supplied flat – requires assembly

Price includes 2 x 260gsm 'Stretch' fabric graphics

Finished with hem and silicone edge

Frame and graphics available separately



# BARRIERS & COVERS



Zone off part of your pavement or garden to create a branded area with these Café Barriers. A starter kit contains a single graphic, plus two posts, two bases and two cross bars.

Then buy an add-on kit for each extra graphic you need – that includes the graphic, one post, one base and two cross bars. Attach them in a line, or at right angles.

# BARISTA NEW

CAFÉ BARRIER

Choose your **STARTER** kit

**SINGLE SIDED**

**DOUBLE SIDED**

**1.2m**     £219 FDC2T0K1     £247 FDC2T4K1

**1.5m**     £234 FDC5T0K1     £272 FDC5T4K1

**1.7m**     £249 FDC7T0K1     £295 FDC7T4K1

in **5** working days

Choose your **ADD ON** kit

**SINGLE SIDED**

**DOUBLE SIDED**

**1.2m**     £165 FDC2T0K2     £197 FDC2T4K2

**1.5m**     £182 FDC5T0K2     £222 FDC5T4K2

**1.7m**     £199 FDC7T0K2     £245 FDC7T4K2

Printed on 285gsm 'Tent' fabric on one side or both sides

Assembled size: 1000(h) x 1600-2100(w) mm

## Starter Kit

2 x bases with vertical posts  
2 x cross bars  
1 x banner

## Add On Kit

1 x base with vertical post  
2 x cross bars  
1 x banner



Optional post sign

**£40**

Holds A4 landscape size poster



NEW

# BREEZE

WINDBREAK

0.9 x 3.7m

A low cost way to zone off stands at fetes and fairs. Hammer the wooden poles into the grass to separate your area from others.

*Poles + printed fabric*

£115 FDSAM0FC

in 5 working days

Exact dimensions:  
940(h) x 3760(w) mm

3 section windbreak  
+ 4 wooden poles

Printed one side on 285gsm  
waterproof 'Tent' Fabric'

# BOUNCER

CROWD BARRIER COVER

1.0 x 2.2m

*Printed barrier cover*

£110 ~~£115~~  
FDBACBC

in 5 working days

Exact dimensions: 1000(h) x 2270(w) mm

Suitable for a 1 x 2.3m crowd barrier

Barrier not included

100gsm vent polyester fabric

Hemmed and eyeletted, cable ties included

Single printed piece folds to provide front and reverse coverage

Holes in the fabric allow wind to pass through easily



# BUILDER

SITE BARRIER COVER

1.8 x 3.2m

*Printed barrier cover*

£110 ~~£185~~  
FDBACBS

in 5 working days



GET A  
CUSTOM  
SIZE

from £27  
per m<sup>2</sup>  
FDASVENE

See website for price  
and minimum/maximum  
dimensions.

Exact dimensions: 1800(h) x 3200(w) mm

Suitable for a 1.8 x 3.2m site barrier

Barrier not included

100gsm vent polyester fabric

Hemmed and eyeletted, cable ties included

Printed one side

Holes in the fabric allow  
wind to pass through easily



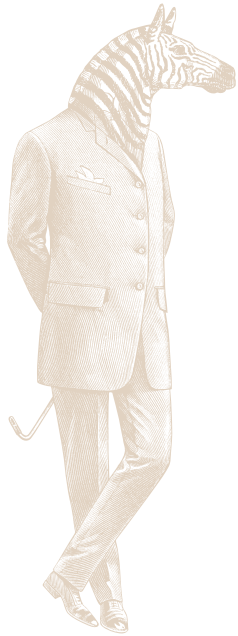


# GAZEBOS



This 'Marquis' gazebo has a fully printed canopy plus one half height wall and one full height wall – £981





**Printed gazebos are all the rage at farmer's markets, festivals and fairs. Our range now features new lower cost options, so you can make the most of your marketing budget.**

In every case, the gazebo frame is the same. It's compact for storage, then pops up and locks into place.

You've got a choice of a plain black canopy, your name or logo printed on the front fascia or your branding fully printed on all sides and the top too. Each canopy is a water resistant material that'll keep you and your stock dry if it rains.

Clip on the number of sides you want. A full height wall hangs from the top, or you can choose half height walls, which come with a rail. Why not print a half height wall for the front too, to act as a cool branded counter?

Remember you can buy all the printed parts separately, so you can change your messages for each season or each event, and keep using the same frame. Neat!



Frame contracts to compact size.



Pull the legs outwards – the frame builds itself.



Pop the canopy on top.



Arrange the corners of the canopy.



This 'Marquis' gazebo has a fully printed canopy plus two half height walls and one full height wall – £1127

# DESIGN YOUR GAZEBO

## Choose your **CANOPY**

The lowest cost gazebos have an unprinted black canopy. Upgrade and get the fascia printed or go all out and have the whole top and fascias printed.

*Black unprinted 'Chief'* (3) £283 FDSMUMFC

*Fascia printed 'Viceroy'* (5) £337 FDSDELFC

*Fully printed 'Marquis'* (7) £698 FDSGZBFC

in (3) to (7) working days

## Then add your **WALLS**

You might not want any walls at all, or mix and match half height or full height walls, printed on one side or double sided. Half height include a hanging rail.

### SINGLE SIDED

### DOUBLE SIDED

*Half height* £146

£202

*Full height* £137

£257



This 'Viceroy' gazebo has a fascia printed canopy plus one half height wall and one full height wall – £620

3x3x3m Gazebo – frame & canopy

Printed on waterproof 285gsm 'Tent' Fabric

Assembled size(mm): 3000(w) x 3000(h) x 3000(d)

Walls full colour print on one side or both sides

Fire retardant and fade resistant

Supplied with heavy duty steel frame, carry bag, ground pegs and guide rope



OUTDOOR



The  
**PINKGIN**  
*distillery*  
Co.  
PLYMOUTH

# GLIMMER NEW

PARASOL

2.8 x 1.8m



Each panel can be individually designed, or have the same pattern repeated.

*Pole + canopy graphic*

£199 FDSMIAFC

in 5 working days

Exact dimensions: 2800(h) x 1800(d)mm

285gsm fade resistant 'Tent' fabric

Printed one side

Aluminium pole

*optional  
water base £20*

# BONDI NEW

DECK CHAIR

0.6 x 1.0m

Branded deckchairs are ace for indoor and outdoor use.  
Create a chill-out area and encourage people to relax.

*Frame + graphic*

£89 FDSWAIFC

in 5 working days

Assembled size (mm): 580(w) x 1000(d)

Adjustable height (mm): 680 - 860(h)

285gsm fade resistant 'Tent' fabric  
cover + wooden folding deck  
chair frame

Printed one side



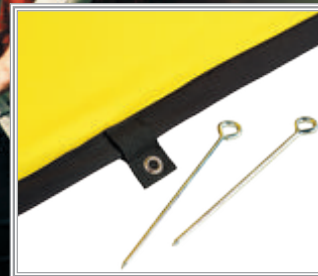
# POP OUT BANNERS



Our **Pop Out Banners** are easy to put up with their 'pop out' construction method. Just release it from the carry bag and watch as it assembles itself in an instant.

Great for outdoor or indoor events.

Each includes 2x single sided graphic panels with eyelet tabs, attached to a spring frame, 6x ground pegs and a carry bag.





# LOLLY

POP OUT BANNER

1.8 x 1.0m

£169<sub>FDPOMOF</sub>

in 5 working days

Exact dimensions: 1840(h) x 1050(w) mm

117gsm 'Flag' fabric + frame

Printed both sides

Also available in optional 'Display' fabric



# JELLY

POP OUT BANNER

1.0 x 2.0m

£169<sub>FDPOSYF</sub>

in 5 working days

Exact dimensions: 1020(h) x 2050(w) mm

117gsm 'Flag' fabric + frame

Printed both sides

Also available in optional 'Display' fabric



# FLAGS



Let's do a little experiment. On your way home tonight, count the number of flags you see. They're absolutely everywhere.

Why's that? Well for less than a hundred quid, you get a three metre high, fluttering, piece of eye catching marketing for your business. They are such great value, it's no wonder businesses are lining them up on their car park and forecourt and outside their front door.

All our flags are suitable for use indoors and outdoors. They're double-hemmed for durability, with a strong pole pocket which is designed to be used multiple times.

# CREATE YOUR FLAG

IN THREE EASY STEPS



## STEP 1 CHOOSE YOUR STYLE

Choose from a Teardrop, Quill or Empire shape, depending on your personal taste. See next page.



## STEP 2 CHOOSE YOUR MATERIAL

Lowest cost option is a single sided flag material. In exposed environments, choose Vent material. Or go double-sided and your message can be seen the right way round on both sides.



## STEP 3 CHOOSE YOUR BASE

Get the right base for the surface you want to display your flag. We've got options for indoors, for grass and outdoor pavements.



## STEP 1

# TEARDROP

STANDING FLAG

2.9m

*Pole + graphic*

£99 FDFQ270

*or graphic only* £67

FDFQ270F

in ⑤ working days

Exact dimensions:

Assembled height: 2900mm

Graphic: 2300(h) x 1160(w) mm

117gsm single sided 'Flag' fabric  
cover + pole

All these standing flags are suitable  
outdoors in winds of up to 15mph

All flags show with optional  
£20 'Cross' base (see page 57)



# QUILL

STANDING FLAG

3.6m

*Pole + graphic*

£85 FDFE360

*or graphic only* £53

FDFE360F

in ⑤ working days

Exact dimensions:

Assembled height: 3600mm

Graphic: 3000(h) x 700(w) mm

117gsm single sided 'Flag'  
fabric cover + pole



# EMPIRE

STANDING FLAG

3.5m

*Pole + graphic*

£99 FDFE350

*or graphic only* £67

FDFE350F

in ⑤ working days

Exact dimensions:

Assembled height: 3500mm

Graphic: 2540(h) x 7700(w) mm

117gsm single sided 'Flag' fabric  
cover + pole

❗ Wash flags at 30°  
before using in wet  
weather to prevent the  
ink from running



## STEP 2

# CHOOSE YOUR FLAG MATERIAL



### SINGLE SIDED

The lowest cost option. Your design will be printed one side. If viewed from behind, you'll see a mirror image on the reverse.



### DOUBLE SIDED

Have a different message on each side of the flag, or show the same message on both sides – we put a blackout divider in between to prevent showthrough.



### VENT WEAVE

For more exposed environments, opt for a single-sided vent material which allows maximum air to pass through.

## STEP 3

# CHOOSE YOUR BASE

### CROSS BASE

For indoor or outdoor use on hard surfaces only.

**£20 each** FDFBCRB



### SQUARE METAL BASE

For indoor or outdoor use on flat surfaces.

**£20 each** FDFBSQ



### WALL MOUNT

For indoor or outdoor use on flat, solid walls.

**£18 each** FDFBWMB



### GROUND SPIKE

Suitable for outdoor use on compacted ground.

**£18 each** FDFBGS



### WATER BASE

Outdoor on flat surfaces in moderate wind conditions.

**£20 each** FDFBWB



### WATER RING

Extra stability for Cross, Square or Water base.

**£8 each** FDFBWR





# EMBASSY NEW

WALL MOUNTED FLAG

0.7 x 1.6m

*Flag only*

£97 FDFKAN55

in ③ working days

Exact dimensions: 760(w) x 1680(h) mm

Printed both sides on 117gsm 'Flag' fabric

Use with a 45 degree flag pole (not included)



*Also available*  
**WINDSOR** NEW  
ROPE & TOGGLE FLAG

*various sizes available from*

£37



# APOSTROPHE

BACKPACK FLAG

1.2m

*Backpack + pole + graphic*

£99<sup>FDBFHO</sup>

*or graphic only £57<sup>FDBFHOF</sup>*

*in 5 working days*

Exact dimensions:

Graphic: 1250(h) x 450(w) mm

117gsm single sided

'Flag' fabric + pole + backpack

Backpack flags include a single sided graphic on 117gsm knitted polyester, poles and a lightweight mesh and polyurethane-leather backpack.



# HYPHEN

BACKPACK FLAG

1.2m

*Backpack + pole + graphic*

£109<sup>FDBFAO</sup>

*or graphic only £65<sup>FDBFAOF</sup>*

*in 5 working days*

Exact dimensions:

Graphic: 1250(h) x 400(w) mm

117gsm single sided 'Flag' fabric

+ pole + backpack



# ROLLER BANNERS



These portable **Roller Banners** are ideal for indoor exhibitions and permanent office displays.

Choose from either economic 440gsm PVC poster or 410gsm greyback Opaque film material which prevents light from passing through and minimises curling on the sides.

Both substrates are printed using latex inks which gives them a scratch, UV and water resistant finish.

Each includes banner stand, pole, single sided poster and carry case.



# BLURB

ROLLER BANNER

2.1 x 0.8m

*Stand + graphic*

£65<sub>BSPSPVPC</sub>

*in ③ working days*

Exact dimensions:

Graphic: 2070(h) x 820(w) mm

440gsm PVC banner

Printed one side

Two swing out feet

Fixed height

Padded carry bag included

*with 410gsm greyback film* £69<sub>BSPSVGBF</sub>



# FORMAL

TELESCOPIC ROLLER BANNER

2.2 x 0.8m

*Stand + graphic*

£95<sub>BSPVIPVC</sub>

*in ③ working days*

Exact dimensions:

Graphic: 850 x 2150mm

Variable visible graphic height: 1430 - 1970mm

440gsm PVC banner

Printed one side

Single rear twist out foot

Padded carry bag included

*with 410gsm greyback film* £99<sub>BSPVIGBF</sub>





# PVC BANNERS



These **PVC banners** are designed for outdoor use, but can be used indoors too.

**Screen** banners are finished with eyelets, so you can tie them to railings or goal posts or hoardings. Just use cable ties. They roll up easily and can be reused.

Alternatively our new **Exposure** banner stand has a water filled base which you can clip the supplied poster to.

Both are printed using latex inks which give them a scratch, UV and water resistant finish.



# SCREEN

## OUTDOOR PVC BANNER

size	each	
0.5 x 1.0m	£19	LFPVC51
0.5 x 1.5m	£28	LFPVC515
1.0 x 2.0m	£58	LFPVC12
1.0 x 3.0m	£87	LFPVC13
1.0 x 4.0m	£116	LFPVC14
1.5 x 3.0m	£130	LFPVC153
1.5 x 4.0m	£174	LFPVC154

in ③ working days

440gsm PVC

Printed one side with latex inks  
– water and UV resistant

Welded hems

Suitable for indoor and outdoor use

Eyelets and cable ties for easy  
hanging included



GET A  
CUSTOM  
SIZE

from £29  
per m<sup>2</sup>  
LFPVCBX

See website for price  
and minimum/maximum  
dimensions.

# EXPOSURE

## OUTDOOR BANNER STAND



2.0 x 0.8m

PVC Banner + stand

£149<sup>BSP0BPVC</sup>

in ③ working days

Assembled dimensions:

2000(h) x 800(w) x 540(d) mm

440gsm PVC

Printed one side with latex inks  
– water and UV resistant

Welded hems + eyelets

Water filled base + telescopic pole  
+ adjustable rail attachment

Carry bag available separately



# POSTERS



Our wide range of posters are for sticking to walls or popping inside frames.

Take a look at our new range of self-adhesive vinyl. Use them to make striking floor graphics or use on walls – they're repositionable so are perfect for short-term promotions.

We've listed the most common sizes, but have them any size you like – see online for our minimum and maximum dimensions for your chosen substrate.



## INDOOR POSTER

Coated satin poster paper printed with light-stable inks

## BACKLIT FILM

Backlit film, for eye-catching use in lightboxes

## COTTON CANVAS

Premium matt cotton canvas with natural look, for elegant art

	<i>size</i>	<i>from</i>		<i>from</i>		<i>from</i>	
A3	420x297mm	£8.33	LFPRMA3	£11.70	LFPBBA3	£15.75	LFPPCA3
A2	594x420mm	£9.00	LFPRMA2	£14.40	LFPBBA2	£18.90	LFPPCA2
A1	841x594mm	£12.15	LFPRMA1	£19.80	LFPBBA1	£24.30	LFPPCA1
A0	841x1189mm	£21.60	LFPRMA0	£31.50	LFPBBA0	£36.90	LFPPCA0
2A0	1682x1189mm	£36.00	LFPRM2A0	£43.20	LFPBB2A0		
per m <sup>2</sup>	1000x1000mm	£21.60	LFPRMX	£31.50	LFPBBX		
		205gsm coated poster paper Satin finish		275gsm backlit film Suitable for indoor use only		350gsm premium matt cotton canvas	

Standby turnaround prices shown – faster turnaround available, including same-day despatch, on certain substrates



## OPAQUE FILM

Thick greyback film is durable and stops light from passing through

## FOAMEX BOARD

Self adhesive vinyl mounted onto 3mm foamex board – optionally laminated

## VINYL STICKER

Permanent self-adhesive vinyl with semi gloss finish

## FLOOR STICKER

Self-adhesive vinyl, suitable for temporary indoor flat floor graphics

## WALL STICKER

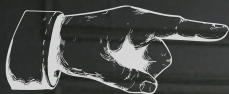
Repositionable self-adhesive fabric for temporary wall graphics

## CARPET STICKER

Self-adhesive fabric for temporary carpet, floor and wall graphics

<i>from</i>	<i>from</i>	<i>from</i>	<i>from</i>	<i>from</i>	<i>from</i>	<i>size</i>
£11.70 LFPGBFA3	£30.60 LFPDFA3	£9.45 LFPPSA3	£21.60 LFPFLVA3	£24.30 LFPWLVA3	£26.10 LFPMSVA3	A3
£14.40 LFPGBFA2	£37.80 LFPDFA2	£11.70 LFPPSA2	£24.30 LFPFLVA2	£26.10 LFPWLVA2	£32.40 LFPMSVA2	A2
£19.80 LFPGBFA1	£51.30 LFPDFA1	£14.40 LFPPSA1	£29.70 LFPFLVA1	£35.10 LFPWLVA1	£41.40 LFPMSVA1	A1
£31.50 LFPGBFA0	£81.00 LFPDFA0	£24.30 LFPPSA0	£41.40 LFPFLVA0	£48.60 LFPWLVA0	£71.10 LFPMSVA0	A0
		£39.60 LFPPSA2A0	£51.30 LFPFLV2A	£64.80 LFPWLVA2A	£80.10 LFPMSVA2A	2A0
		£24.30 LFPPSX	£41.40 LFPFLVX	£48.60 LFPWLVA3	£71.10 LFPMSVX	per m <sup>2</sup>
410gsm grey back film Suitable for indoor use only	150gsm permanent self-adhesive vinyl mounted onto 3mm foamex Gloss or matt lamination available	150gsm permanent self-adhesive vinyl Gloss finish	170gsm self-adhesive floor vinyl	325gsm repositionable self-adhesive wall fabric	385gsm self-adhesive, multi-surface fabric	

# WALLPAPER



Jazz up your boardroom, pimp your office or bejazzle the canteen with this funky personalised wallpaper.



# WALLPAPER NEW

## BESPOKE PRINTED

It's easy to order bespoke printed wallpaper. Just measure the whole area you need and we'll design something to fill it.

Our process slices the design into strips, around double the width of a normal roll of wallpaper.

The finish is smooth and matt, like premium wallpaper.

£45 per m<sup>2</sup> LFPWPPWX

in 6 working days

147gsm uncoated non-woven wallpaper

Soft smooth matt finish

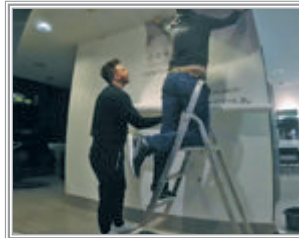
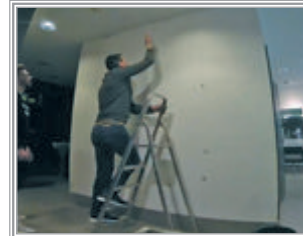
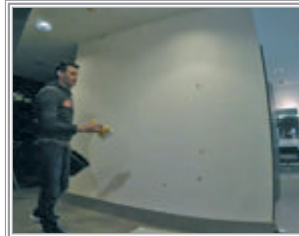
Printed one side with latex inks

– water and UV resistant

Paste not included

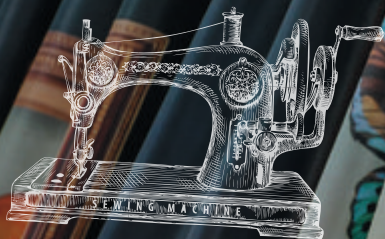
## *Put it up like regular wallpaper*

To apply, paste the wall with regular paste and put up like you would at home. We recommend optional 5mm overlap which makes it easier to align each drop to the one next to it.



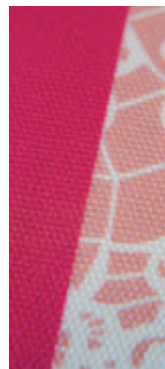


# PRINTED FABRIC



With printed fabric, the possibilities are endless. You can buy any of our fabrics, printed with your design and priced by the square metre. The minimum price is just one square metre. Each fabric comes in different widths, so check online for the maximum width and lengths.

The lowest cost option is unfinished raw fabric, great if you're making it into something else. Or opt for a hem, to make a neat edge. Other optional finishes include eyelets or silicon edges – add to your basket to see the cost.



## FLAG

Lightest weight fabric suitable for thin curtains and indoor or outdoor flags

*per m<sup>2</sup>*

**£22** FDASFLAR

117gsm knitted polyester

## VENT

Perforated mesh material is great for exposed outdoor environments

*per m<sup>2</sup>*

**£22** FDASVENR

100gsm 'vented' fabric

## ACOUSTIC

Rough textured acoustic fabric for maximum sound absorption

*per m<sup>2</sup>*

**£37** FDASACR

270gsm textured acoustic polyester

## STRETCH

As used on our pop up display range – good for tensioned display stands

*per m<sup>2</sup>*

**£25** FDASSTRR

260gsm 100% stretch polyester

## TENT

Waterproof 100% polyester coated fabric is perfect for outdoor items

*per m<sup>2</sup>*

**£34** FDASTENR

285gsm 100% coated polyester

## DISPLAY

For indoor retail and showroom promotional purposes like table cloths

*per m<sup>2</sup>*

**£25** FDASDISR

210gsm polyester

## BACKLIT

Ideal for use in lightboxes, large and small – optional silicone edging

*per m<sup>2</sup>*

**£37** FDASBACR

165gsm PU coated polyester fabric

## DIMPLE

Honeycomb deep textured fabric with sound absorbing properties

*per m<sup>2</sup>*

**£63** FDASACCR

300gsm 10mm 'honeycomb' textured acoustic fabric

in **5** working days